



Casting Emission Reduction Program

Prepared by:

TECHNIKON LLC

5301 Price Avenue ▼ McClellan, CA, 95652 ▼ (916) 929-8001

www.technikonllc.com

US Army Task N256
Pre-Production Air Emission Test Report
80% Western – 20% Southern
Bentonite Clay Ratios

Technikon # RE 100 1 1 5 DT

10 May 2001

This document was revised for unlimited public distribution.



THIS PAGE INTENTIONALLY LEFT BLANK

THIS PAGE INTENTIONALLY LEFT BLANK

Table of Contents

Executive Summary	1
1.0 Introduction.....	3
1.1 Background	3
1.2 CERP Objectives.....	3
1.3 Report Organization	4
1.4 Preliminary Testing	4
1.5 Specific Test Plan and Objectives	5
2.0 Test Methodology	7
2.1 Description of Process and Testing Equipment	7
2.2 Description of Testing Program	7
2.3 Quality Assurance and Quality Control (QA/QC) Procedures	10
3.0 Test Results.....	11
4.0 Discussion of Results and Conclusions	15

List of Figures

Figure 2-1. Pre-Production Foundry Layout Diagram	7
Figure 3-1. Comparison of Emission Indicators for Test DT	13
Figure 3-2. Comparison of Selected HAPs from Test DT.....	13

List of Tables

Table 1-1. Test Plan Summary	6
Table 2-1. Process Parameters Measured.....	9
Table 2-2. Sampling and Analytical Methods.....	9
Table 3-1. Test Plan DT Average Results.....	12
Table 3-2. Test Plan DT Average Process and Stack Parameters	14

Appendices

Appendix A Approved Test Plan and Process Instructions for Test Series DT	17
Appendix B Detailed Emission Test Results for Test Series DT	39
Appendix C Process and Source Data for Test DT	45
Appendix D US EPA Method 25A Charts for Test Plan DT	49
Appendix E Listing of Support Documents	57
Appendix F Glossary.....	61

THIS PAGE INTENTIONALLY BLANK

Executive Summary

This report contains the results of testing conducted at the Technikon/CERP Pre-Production Foundry to establish a tap water reference against which the effects of advanced oxidant (AO) enriched water on the emissions from vented cored greensand molds may be investigated. Casting surface quality was not evaluated during these tests. This report provides results from a total of nine test pours, with the first two tests performed to condition virgin sand and mold materials. Results are presented for all nine tests, and separately for the seven post-conditioning tests for sake of comparison. The approved test plan for this test series may be found in Appendix A of this document. Points of comparison between this and related AO studies have been **bolded**.

This report contains the results of emission testing at the Casting Emission Reduction Program (CERP) Pre-Production Foundry operated by Technikon LLC. The specific objective of Test Plan DT was to determine the emission reductions, if any, of organic Hazardous Air Pollutants (HAPs) and Volatile Organic Compounds (VOCs) for a vented **tap water** tempered virgin greensand mold utilizing a **80/20** Western to Southern bentonite clay ratio and Seacoal. The core package consisted of organic free sodium silicate cores so that the only known mold organic was Seacoal. The test results may be compared to Pre-Production Tests DR, and DQ that also utilize a **tap water** tempered virgin greensand vented mold with Seacoal, and bentonite clay ratios of **50/50** and **20/80** Western to Southern respectively. In addition, test results may be compared to Pre-Production Tests DA, DS, and DU that are duplicates of DQ, DR, and DT, except that they utilize **advanced oxidation (AO) enriched water** additions instead of tap water.

The Pre-Production Foundry is a simple general purpose manual foundry that was adapted and instrumented to make detailed organic emission measurements, using methods based on EPA protocols for pouring, casting cooling, and shakeout processes on discrete mold and core packages. The measurements are conducted under tightly controlled conditions not feasible in a commercial foundry. It is the initial step in the schema of evaluating a new product or process for the foundry industry. The results of testing in the Pre-production Foundry are evaluated to determine whether further testing in the Technikon Production Foundry is warranted.

The testing performed involved the collection of continuous air samples over a seventy-five minute period, including the mold pouring, cooling, shakeout, and post shakeout periods. Process and stack parameters were measured and include: the weights of the casting, mold, core binder, and core; Loss on Ignition (LOI) values for the mold prior to the test and at shakeout; percent clays; metallurgical data; and stack temperature, pressure, volumetric flow rate and moisture content. The process parameters were maintained within prescribed ranges in order to ensure the reproducibility of the tests. Nine (9) individual sampling events are shown for test plan DT. Two tests were utilized to condition the sand to the tap water, and seven tests were utilized for the actual test.

Samples were collected and analyzed for a limited list of twenty (20) target compounds using procedures based on US EPA Method 18. Continuous monitoring of the Total Gaseous Organic Concentration (TGOc), formerly Total Hydrocarbon Content (THC), of the emissions was conducted according to US EPA Method 25A. Finally, the “condensable” organic material in the emissions was determined using a Technikon developed procedure. The “condensables” represent the “back half” catch from US EPA Method 5.

The mass emission rate of each parameter or target compound was calculated, in pounds per ton of metal, using the Method 25A data or the laboratory analytical results, the measured source data, and the weight of each casting. In addition to the TGOc (THC) as Propane, other “emissions indicators” were also calculated. The HC as Hexane results represent the sum of all organic compounds detected and expressed as Hexane. All of the following sums are sub-groups of this measure. The “Sum of VOCs” is based on the sum of the individual target VOCs measured and includes the HAPs and Polycyclic Organic Material (POMs) listed in the Clean Air Act Amendments of 1990. The “Sum of HAPs” is the sum of the individual target HAPs measured and includes the POMs. Finally, the “Sum of POMs” is the sum of all of the polycyclic organic material measured. Results for the emission indicators, for all nine-test runs, and for the seven post-conditioning test runs, are shown in the following table. All results are measured as pounds emitted per ton of metal.

Number of Tests Included	TGOc (THC) As Propane	HC as Hexane	Sum of VOCs	Sum of HAPs	Sum of POMs
7	2.33	0.643	0.221	0.204	ND
9	2.57	0.678	0.245	0.227	ND

Due to the fact that the results expressed here are sums derived from a selected set of approximately 20 analytes, they are comparable only to test series utilizing an equivalent analyte list. All test series performed for the AO water/Tap water, clay ratio studies will utilize the selected analyte list, and are therefore comparable. But they cannot be compared to similarly titled results from test series in which a full analyte list of greater than 70 compounds has been used to generate the data.

In addition, it must be noted that the reference and product testing performed is not suitable for use as general emission factors or for purposes other than evaluating the relative emission reductions associated with the use of alternative materials, equipment, or processes. The emissions measurements are unique to the specific castings produced, materials used, and testing methodology associated with these tests, and should not be used as the basis for estimating emissions from actual commercial foundry applications.

1.0 Introduction

1.1 Background

Technikon LLC is a privately held contract research organization located in McClellan, California, a suburb of Sacramento. Technikon offers emissions and process research services to industrial and government client specializing in the metal casting and mobile emissions areas. Technikon also operates the Casting Emission Reduction Program (CERP). CERP is a cooperative initiative between the Department of Defense (US Army) and the United States Council for Automotive Research (USCAR). Its purpose is to evaluate alternative casting materials and processes that are designed to reduce air emissions and/or produce more efficient casting processes. Other technical partners directly supporting the project include: the American Foundry Society (AFS); the Casting Industry Suppliers Association (CISA); the US Environmental Protection Agency (USEPA); and the California Air Resources Board (CARB). Each of these partners is represented on a Steering Committee (as voting or non-voting members) that has oversight for the CRADA testing conducted at the Technikon facility.

1.2 CERP Objectives

The primary objective of CERP program is to evaluate materials, equipment, and processes used in the production of metal castings. The Technikon facility was designed to evaluate alternate materials and production processes designed to achieve significant air emission reductions, especially for the 1990 Clean Air Act Amendment organic Hazardous Air Pollutants (HAP). The facility has two principal testing arenas: a Pre-production Foundry designed to measure airborne emissions from individually poured molds, and a Production Foundry designed to measure air emissions in a continuous full scale production process. Each of these testing arenas has been specially designed to facilitate the collection and evaluation of airborne emissions and associated process data. The data collected during the various testing projects are evaluated to determine both the airborne emissions impact of the materials and/or process changes, and their stability and impact upon the quality and economics of casting and core manufacture. The materials, equipment, and processes may need to be further adapted and defined so that they will integrate into current casting facilities smoothly and with minimum capital expenditure.

Normally, Pre-production testing is conducted first in order to evaluate the air emissions impact of a proposed alternative material, equipment, or process in the most cost effective manner. The Pre-production Foundry is a simple general purpose manual foundry that was adapted and instrumented to make detailed emission measurements using methods based on EPA protocols for pouring, casting cooling, and shakeout processes on discrete mold and core packages under tightly controlled conditions not feasible in a commercial foundry. The Pre-production Foundry uses an eight-cavity, bottom feed AFS step block as its test mold pattern.

The Production Foundry's design as a basic greensand foundry was deliberately chosen so that whatever is tested in this facility will also be convertible to existing mechanized commercial foundries. The type and size of equipment, materials, and processes used emulate an automotive foundry. This facility is used to evaluate materials, equipment, and processes in a continuous process that is allowed to vary to the limits of commercial experience in a controlled manner. The Production Foundry provides simultaneous detailed individual emission measurements using methods based on USEPA protocols of the melting, pouring, sand preparation, mold making, and core making processes. It is instrumented so that the data on all activities of the metal casting process can be simultaneously and continuously collected, in order to completely evaluate the economic impact of the prospective emission reducing strategy. The Production Foundry's test casting is a single cavity Ford Motor Company I-4 engine block. Castings are randomly selected to evaluate the impact of the material, equipment, or process on casting quality. Alternative materials, equipment, and processes that demonstrate significant air emission reduction potential, preserve casting quality parameters, and that are economically viable based on the Pre-production testing, may be further evaluated in the Production Foundry.

It must be noted that the results from the reference and product testing performed are not suitable for use as general emission factors or for other purposes other than evaluating the relative emission reductions associated with the use of alternative materials, equipment, or manufacturing processes. The emissions measurements are unique to the specific castings produced, materials used, and testing methodology associated with these tests.

1.3 Report Organization

This report has been designed to document the methodology and results of a specific test plan that was used to evaluate the performance of an alternative material, equipment, or process in the Pre-production Foundry. Section 2 of this report includes a summary of the methodologies used for data collection and analysis, emission calculations, QA/QC procedures, and data management and reduction methods. Specific data collected in support of these tests are summarized in Section 3 of this report, with detailed data included in Appendices B and C of this report. Section 4 of this report contains a discussion of the results.

The raw data for this test series are included in a data binder that is maintained at the Technikon facility. There are several support documents that provide details regarding the testing and analytical procedures used. Appendix F contains a listing of these support documents.

1.4 Preliminary Testing

The foundations for the specific test protocols and airborne emission measurements have been determined from testing performed to:

- Establish the required number of samples needed to statistically support the evaluation of emission reduction potentials of the alternative materials, equipment, and processes that may be evaluated;
- Provide a series of standardized emissions from standard mold and core packages.

It has been determined that nine replicate tests will provide a statistically significant sample for the purposes of evaluating the emission reductions from alternative materials, equipment, and processes. The results of the testing conducted in support of this conclusion is included in a report entitled Evaluation of the Required Number of Replicate Tests to Provide Statistically Significant Air Emission Reduction Comparisons for the CERP Pre-production Foundry Test Program.

Appendix A of this report contains the Test Plan for Test Series DT.

Appendix B of this report contains detailed test results for Test Series DT.

1.5 Specific Test Plan and Objectives

This report contains the results of testing performed to assess the emission reductions, if any, of organic Hazardous Air Pollutants (HAPs) and Volatile Organic Compounds (VOCs) for a tap water treated virgin greensand mold utilizing a 80/20 Western to Southern bentonite clay ratio and Seacoal. The core package consists of organic free sodium silicate cores so that the only known mold organic is Seacoal.

The results from test DT will provide comparative data to Pre-production Tests DR and DQ, which are also tap water tempered greensand molds with Seacoal, but with bentonite clay ratios of 50/50 and 20/80 Western to Southern, respectively. Test DT will also provide a tap water reference for comparison to three additional Test Series, DA, DS, and DU, where advanced oxidation (AO) enriched water additions were substituted for tap water in molds containing each of the three clay ratios listed above.

Table 1-1 provides a summary of the Test Plan. The detail of the approved test plan is included in Appendix A.

Table 1-1. Test Plan Summary

	Test Plan
Type of Process tested	80/20 Western to Southern Clays w/ Tap Water
Test Plan Number	RE 1 00115DT
Mold Type	Hand Rammed Greensand
Core Type	Organic Free Sodium Silicate
Casting Type	Eight-cavity bottom feed AFS step block
Number of molds poured	11 molds
Test Dates	1-16-01 to 1-18-01
Emissions Measured	20 organic HAPs and VOCs
Process Parameters Measured	Total Casting, Mold and Core Weights, Metallurgical data, Mold and Core Component Weights, % LOI (mold and core), % Clay, Stack Temperature, Stack Moisture Content, Stack Pressure, and Stack Volumetric Flow Rate

2.0 Test Methodology

2.1 Description of Process and Testing Equipment

Figure 2-1 is a diagram of the Pre-production Foundry process equipment.

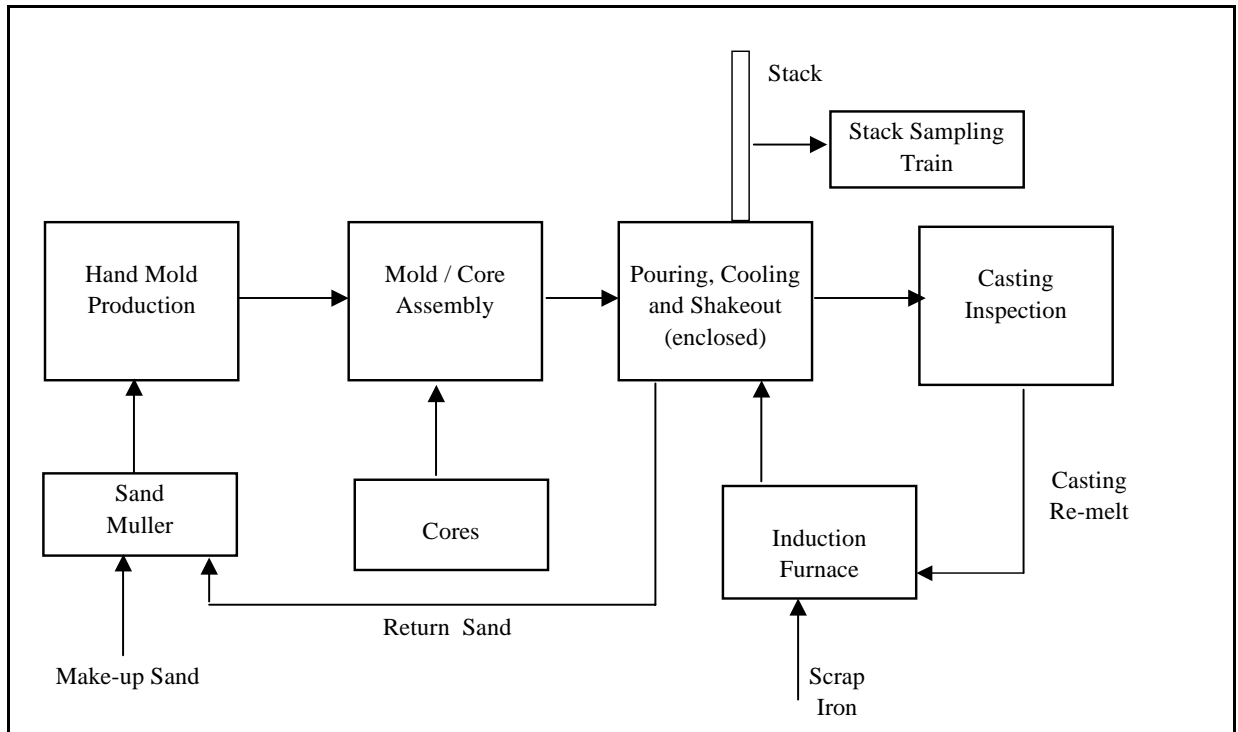


Figure 2-1. Pre-Production Foundry Layout Diagram

2.2 Description of Testing Program

The specific steps used in this sampling program are summarized below:

- 1. Test Plan Review and Approval:** The proposed test plan was reviewed by the Technikon staff and CTC Program Manager, and approved.
- 2. Mold, Core and Metal Preparation:** The molds and cores are prepared to a standard composition by the CERP production team. The cores are made either by hand (if sodium silicate) or blown by a Redford core blower, and relevant process data are collected. If new core processes are being tested, the cores are placed in new lake



sand/clay/water molds. If new mold binder systems or processes are being evaluated, organic free sodium silicate step cores are placed into the molds. Iron is melted in a 1000 lb. Ajax induction furnace (Model MFB-1000). The amount of metal melted is determined from the poured weight of the casting and the number of molds to be poured. The metal composition is prescribed by a metal composition worksheet. The weight of metal poured into each mold is recorded on the process data summary sheet.

3. **Individual Sampling Events:** Replicate tests are performed on the mold/core packages. The mold/core packages are placed into an enclosed test stand. Iron is poured through an opening in the top of the enclosure. The opening is closed as soon as pouring is completed. Continuous air samples are collected during the forty-five minute pouring and cooling process, during the fifteen minute shakeout of the mold, and for an additional fifteen minute period following shakeout. The total sampling time is seventy-five minutes.



*Pouring of Step Core Molds
Through Opening in
Collection Hood*



*Castings on the
Shake-out Deck*

The finished castings are cleaned and quality checks of the castings are performed. Additional tests may be required for new mold materials with the molding sand being recycled into new molds to evaluate the long-term effects on molding sand properties. The weights of the molds, cores, Seacoal additions, and binder are recorded for each mold on the Process Data Summary Sheet. In addition, the pouring temperature, number of cavities poured, the %LOI and the % clays of the mold before pouring and at shakeout, and the % LOI of the core are recorded on the Process Data Summary Sheet.

The unheated emission hood is ventilated at approximately 700 SCFM through a 12-inch diameter heated duct. Emissions samples are drawn from a sampling port located to ensure conformance with EPA Method 1. The tip of the probe is located in the centroid of the duct. The samples are collected at a constant rate in adsorption tubes.

4. **Process Parameter Measurements:** Table 2-1 lists the process parameters that are monitored during each test. The analytical equipment and methods used are also listed.



*Volatiles and
Condensables Sampling*

Table 2-1. Process Parameters Measured

Parameter	Analytical Equipment and Methods
Core Weight	Mettler PJ8000 Digital Scale (Gravimetric)
Mold Weight	Acme 4260 Crane Scale (Gravimetric)
Casting Weight	Westweigh PP2847 Platform Scale (Gravimetric)
Seacoal Weight	Toledo PAC-DPC-606050 balance (Gravimetric)
Binder Weight	Mettler PJ8000 Digital Scale (Gravimetric)
Volatiles	Mettler Pb302 Scale (AFS procedure 212-87-S)
LOI, % at mold and shakeout	Denver Instruments XE-100 Analytical Scale (AFS procedure 212-87-S)
Core LOI, %	Denver Instruments XE-100 Analytical Scale (AFS procedure 321-87-S)
Clay, % at mold and shakeout	Dietert 535A MB Clay Tester (AFS Procedure 210-89-S)
Metallurgical Parameters	
Pouring Temperature	Electro-Nite DT 260 (T/C immersion pyrometer)
Carbon/Silicon Fusion Temperature	Electro-Nite Datacast 2000 (Thermal Arrest)
Alloy Weights	Ohaus MP@
Mold Compactability	Dietert 319A Sand Squeezer (AFS procedure 221-87-S)
Carbon/Silicon	Baird Foundry Mate Optical Emissions Spectrometer

5. **Emissions Measurement:** The specific sampling and analytical methods used in the Pre-production Foundry tests are based on the USEPA reference methods shown in Table 2-2. The details of the specific testing procedures and their variance from the reference methods are included in the Technikon Emissions Testing and Analytical Testing Standard Operating Procedures.

Table 2-2. Sampling and Analytical Methods

Measurement Parameter	Test Method
Port location	EPA Method 1
Number of traverse points	EPA Method 1
Gas velocity and temperature	EPA Method 2
Gas density and molecular weight	EPA Method 3a
Gas moisture	EPA Method 4, gravimetric
HAPs concentration	EPA Method 18, TO11, NIOSH 2002*
VOCs concentration	EPA Method 18, 25A, TO11, NIOSH 2002*
Condensables	Technikon developed method**

*These methods were specifically modified to meet the testing objectives of the CERP Program.

**The Technikon condensables method is intended to provide a measure of the EPA Method 5 “back-half” determination.

6. **Data Reduction, Tabulation and Preliminary Report Preparation:** The analytical results of the emissions tests provide the mass of each analyte in the sample. The total mass of the analyte emitted is calculated by multiplying the mass of analyte in the sample times the ratio of total stack gas volume to sample volume. The total stack gas volume is calculated from the measured stack gas velocity and duct diameter, and corrected to dry standard conditions using the measured stack pressures, temperatures, gas molecular weight, and moisture content. The total mass of analyte is then divided by the weight of the casting poured to provide emissions data in pounds of analyte per ton of metal.

The results for each sampling event are included in Appendix B of this report. The results for each test are also averaged and are shown in Table 3-1.

7. **Report Preparation and Review:** The Preliminary Draft Report is reviewed by the Process Team and Emissions Team to ensure its completeness, consistency with the test plan, and adherence to the prescribed QA/QC procedures. Appropriate observations, conclusions, and recommendations are added to the report to produce a Draft Report. The Draft Report is reviewed by the Vice President-Measurement Technologies, the Vice President-Operations, and the Technikon President. Comments are incorporated into a Final Report that is circulated for signatures and then distributed.

2.3 Quality Assurance and Quality Control (QA/QC) Procedures

Detailed QA/QC and data validation procedures for the process parameters, stack measurements, and laboratory analytical procedures are included in the CERP Standard Operating Procedures. In order to ensure the timely review of critical quality control parameters, the following procedures are followed:

- Immediately following the individual sampling events performed for each test, specific process parameters are reviewed by the Manager - Process Engineering to ensure that the parameters are maintained within the prescribed control ranges. Where data are not within the prescribed ranges, the Manager - Process Engineering and the Vice President-Operations determine whether the individual test samples should be invalidated or flagged for further analysis following review of the laboratory data.
- The source (stack) and sampling parameters, analytical results and corresponding laboratory QA/QC data are reviewed by the Emissions Measurement Team to confirm the validity of the data. The VP-Measurement Technologies reviews and approves the recommendation, if any, that individual sample data should be invalidated. Invalidated data are not used in subsequent calculations.

3.0 Test Results

The average emission result, in pounds per ton of metal poured, is presented in Table 3-1 for tests reported in this document. This table includes all the individual VOC compounds that comprise the selected analyte list for this test series, along with the corresponding sum of VOCs, sum of HAPs, and sum of POMs. The test averages are presented for the entire set of nine validated test pours as well as for the seven post-conditioning test pours for comparison. The table also includes the TGO (THC) as Propane and HC as Hexane. Figures 3-1 and 3-2 present the emissions indicators and individual HAP emissions data from Table 3-1 in graphical form. Appendix B contains the detailed data including the results for all analytes measured. Table 3-2 includes the averages of the key process and source parameters and the data target ranges. Detailed process and source data are presented in Appendix C.

Method 25A charts for the tests are included in Appendix D of this report. The charts are presented to show the VOC profile of emissions for each pour.

The validation log used to validate the laboratory data is for this test is maintained in the Technikon offices.

Table 3-1. Test Plan DT Average Results

Analytes	7 Mold Average	9 Mold Average
TGOC (THC) as Propane	2.33	2.57
HC as Hexane	0.643	0.678
Sum of VOCs	0.221	0.245
Sum of HAPs	0.204	0.227
Sum of POMs	ND	ND
Individual Organic HAPs		
Benzene	0.091	0.104
Toluene	0.051	0.055
Xylenes	0.034	0.037
Phenol	0.011	0.012
Acetaldehyde	0.007	0.007
Ethylbenzene	0.007	0.007
Aniline	0.004	0.005
1-Methylnaphthalene	ND	ND
2-Methylnaphthalene	ND	ND
Naphthalene	ND	ND
Other VOCs		
Octane	0.009	0.010
1,2,4-Trimethylbenzene	0.007	0.008
Other Analytes		
Condensables	0.259	0.295
Carbon Monoxide	4.36	4.49
Methane	0.956	1.08
Carbon Dioxide	26.8	26.4

ND: Non Detect

All "Other Analytes" are not included in the Sum of HAPs or VOCs.

Figure 3-1. Comparison of Emission Indicators for Test DT

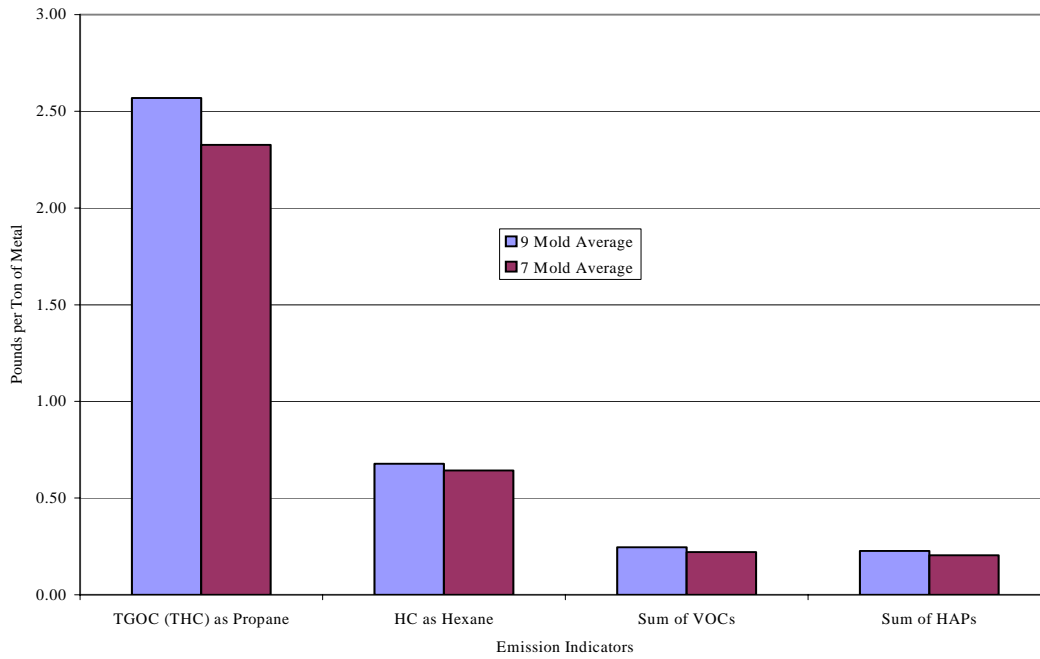


Figure 3-2. Comparison of Selected HAPs from Test DT

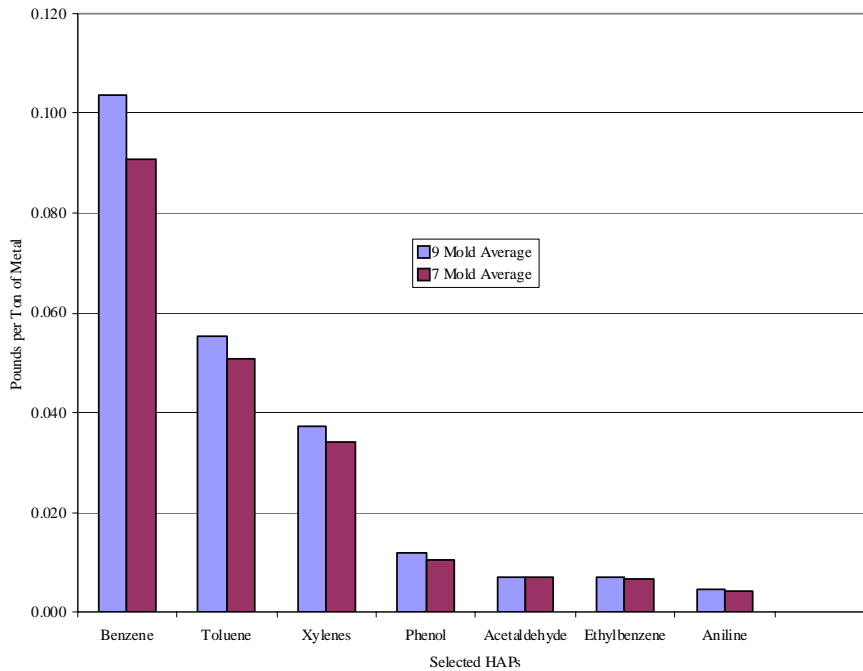


Table 3-2. Test Plan DT Average Process and Stack Parameters

Average Process and Stack Parameters	Average of DT	Target Range
Casting Metal Weight, lbs.	243	240 - 250
Total Mold Weight, lbs.	1351	1350 - 1420
Total Core Weight, lbs.	60	58 - 60
Compactability, %	48	45 - 51
Total Binder Weight, lbs	2.9	2.8 - 3.1
Core Ratio Resin (part I) to co-reactant (part II)	NA	NA
Greensand mold LOI, % @ 1800°F	5.03	4.5 - 5.2
MB Clay, %	7.27	6.5 - 7.5
Core LOI, % @ 1400°F	0.57	0.2 - 0.6
Greensand Mold Volatiles, % @ 900°F	0.79	NA
Pour Temperature, °F	2632	2620 - 2640
Mold green compressive strength, psi	18.17	8 - 20
Core Resin Content, %	4.76	4.7 - 5.1
Water Type used in Mold	Tap	Tap
Average Stack Temperature, °F	106	110 ± 15
Total Moisture Content, %	1.31	0 - 2.5
Average Stack Velocity, ft./sec.	15.80	15 ± 2
Avg. Stack Pressure, in. Hg	30.33	29.92 ± 1
Stack Flow Rate, scfm	696	700 ± 50

NA: Not Applicable

4.0 Discussion of Results and Conclusions

A selected analyte list was utilized in the analysis of stack emissions from Test Series DT. The results for the sum of HAPs, VOCs, and POMs that are derived from this list can therefore only be compared to other test series that also utilize this list. The sampling and analytical methodologies were the same for Tests DQ, DA, DR, DS, DT, and DU, so comparison of these six test series will allow the effects of advanced oxidation treatment to be evaluated against tap water for three different ratios of western/southern bentonite clays, 20/80, 50/50, and 80/20.

Two methods were employed to measure undifferentiated hydrocarbon emissions, TGOC (THC) as propane, performed in accordance with EPA Method 25A, and HC as hexane. EPA Method 25A, TGOC (as propane), is weighted to the detection of more volatile hydrocarbon species, beginning at C1 (methane), with results calibrated against a three-carbon alkane (propane). HC as hexane is weighted to detection of relatively less volatile compounds. This method detects hydrocarbon compounds in the alkane range between C6 and C16, with results calibrated against a six-carbon alkane (hexane).

A total of 11 test pours were performed for Test DT. Two of the test pours (Test 1 and 7) were invalidated due to process validation considerations; therefore, the final averages reported do not include results from these tests. For comparison between the other Clay Ratio tests using AO enriched water, Tests 1 through 3 were conditioning tests and Tests 4 through 11 were considered post-conditioning test pours. Table 3-1 shows the final averages for both the seven post-conditioning and the complete set of nine test pours for comparison. Figures 3-1 and 3-2 represent the information in Table 3-1 in graphical form. The LOI content varied through the test in a uniform manner although the range was wider than intended. THC emission results varied in proportion to the LOI variation and were centered on the acceptable mean LOI of 5.03%.

THIS PAGE INTENTIONALLY LEFT BLANK

**APPENDIX A APPROVED TEST PLAN AND PROCESS
INSTRUCTIONS FOR TEST SERIES DT**

THIS PAGE INTENTIONALLY BLANK

10 MAY 2001

the above ranges. DT molds will be made only after the process lab determinations or projections are complete.

SPECIAL CONDITIONS: Only **tap water** shall be used. The total hydrocarbon analyzer, tube and bag samples, & condensate trap shall be used to gather and conduct emission tests on the sand to form the (9) mold test. Process effects on sand physical and mechanical properties shall be tracked.

Steven M. Knight

Process Engineering Manager (Technikon)

Date

C.R. Glowacki

VP Measurement Technology

Date

G. Crandell

VP Operations (Technikon)

Date

Larry Cottrell

Emissions Team (USCAR)

Date

Larry Cottrell

Process and Facilities Team (USCAR)

Date

R. O. Myers

Project Manager (CTC)

Date

PRE-PRODUCTION DT SERIES SAMPLE PLAN

Method	Sample #	Data	Sample	Duplicate	Blank	Breakthrough	Spike	Spike Duplicate	Flow (ml/min)	Train Channel	Comments
1/16/01											Samples to Clayton Lab.
EVENT 1											Unless noted.
AIRSENSE	DT00101										TOTAL
THC	DT00102	X									TOTAL
NIOSH 1500 Mod.	DT00103		1						200	1	TOTAL (Orbo 32 SM)
NIOSH 1500 Mod.	DT00104		1						200	2	TOTAL (Orbo 32 SM)
NIOSH 1500 Mod.	DT00105				1				0	2	QC-Manifold Blank
Excess									200	3	Excess
Excess									200	4	Excess
GAS, CO + CO2	DT00106		1						60	5	BAG Sample to Airtoxics Lab.
TO11	DT00107		1						500	6	Total
TO11	DT00108				1				0	6	QC - Manifold Blank
Excess									500	7	Excess
NIOSH 2002	DT00109		1						750	8	TOTAL (SKC 226-15)
NIOSH 2002	DT00110				1				0	8	QC- Manifold Blank (SKC 226-15)
Excess									750	9	Excess
Excess									750	10	Excess
Excess									750	11	Excess
Moisture									500	12	EPA Method 4
Excess									2500	13	
PUF	DT001		1						15L		Sample using opposite port

PRE-PRODUCTION DT SERIES SAMPLE PLAN

Method	Sample #	Data	Sample	Duplicate	Blank	Breakthrough	Spike	Spike Duplicate	Flow (ml/min)	Train Channel	Comments
1/16/01											Samples to Clayton Lab.
EVENT 2											Unless noted.
AIRSENSE	DT00201										TOTAL
THC	DT00202	X									TOTAL
NIOSH 1500 Mod.	DT00203		1						200	1	TOTAL (Orbo 32 SM)
NIOSH 1500 Mod.	DT00204		1						200	2	TOTAL (Orbo 32 SM)
Excess									200	3	Excess
Excess									200	4	Excess
GAS, CO + CO2	DT00205		1						60	5	BAG Sample to Airtoxics Lab.
TO11	DT00206		1						500	6	TOTAL
TO11	DT00207					1			500	6	TOTAL
Excess									500	7	Excess
NIOSH 2002	DT00208		1						750	8	TOTAL (SKC 226-15)
Excess									750	9	Excess
Excess									750	10	Excess
Excess									750	11	Excess
Moisture									500	12	EPA Method 4
Excess									2500	13	
PUF	DT002		1						15L		Sample using opposite port

PRE-PRODUCTION DT SERIES SAMPLE PLAN

Method	Sample #	Data	Sample	Duplicate	Blank	Breakthrough	Spike	Spike Duplicate	Flow (ml/min)	Train Channel	Comments
1/16/01											Samples to Clayton Lab.
EVENT 3											Unless noted.
AIRSENSE	DT00301										TOTAL
THC	DT00302	X									TOTAL
NIOSH 1500 Mod.	DT00303		1						200	1	TOTAL (Orbo 32 SM)
NIOSH 1500 Mod.	DT00304			1					200	2	TOTAL (Orbo 32 SM)
NIOSH 1500 Mod.	DT00305		1						200	3	TOTAL (Orbo 32 SM)
NIOSH 1500 Mod.	DT00306			1					200	4	TOTAL (Orbo 32 SM)
NIOSH 1500 Mod.	DT00307				1						QC - (Orbo 32 SM)
GAS, CO + CO2	DT00308		1						60	5	BAG Sample to Airtoxics Lab.
TO11	DT00309		1						500	6	TOTAL
TO11	DT00310			1					500	7	TOTAL
TO11	DT00311				1						QC
NIOSH 2002	DT00312		1						750	8	TOTAL (SKC 226-15)
NIOSH 2002	DT00313			1					750	9	TOTAL (SKC 226-15)
NIOSH 2002	DT00314				1						QC - (SKC 226-15)
Excess										10	Excess
Excess										11	Excess
Moisture									500	12	EPA Method 4
Excess									2500	13	
PUF	DT003		1						15L		Sample using opposite port

PRE-PRODUCTION DT SERIES SAMPLE PLAN

Method	Sample #	Data	Sample	Duplicate	Blank	Breakthrough	Spike	Spike Duplicate	Flow (ml/min)	Train Channel	Comments
1/17/01											Samples to Clayton Lab.
EVENT 4											Unless noted.
AIRSENSE	DT00401										TOTAL
THC	DT00402	X									TOTAL
NIOSH 1500 Mod.	DT00403		1						200	1	TOTAL (Orbo 32 SM)
NIOSH 1500 Mod.	DT00404		1						200	2	TOTAL (Orbo 32 SM)
Excess									200	3	Excess
Excess									200	4	Excess
GAS, CO + CO2	DT00405		1						60	5	BAG Sample to Airtoxics Lab.
TO11	DT00406		1						500	6	TOTAL
Excess									500	7	Excess
NIOSH 2002	DT00407		1						750	8	TOTAL (SKC 226-15)
Excess									750	9	Excess
Excess									750	10	Excess
Excess									750	11	Excess
Moisture									500	12	EPA Method 4
Excess									2500	13	
PUF	DT004		1						15L		Sample using opposite port

PRE-PRODUCTION DT SERIES SAMPLE PLAN

Method	Sample #	Data	Sample	Duplicate	Blank	Breakthrough	Spike	Spike Duplicate	Flow (ml/min)	Train Channel	Comments
1/17/01											Samples to Clayton Lab.
EVENT 5											Unless noted.
AIRSENSE	DT00501										TOTAL
THC	DT00502	X									TOTAL
NIOSH 1500 Mod.	DT00503		1						200	1	TOTAL (Orbo 32 SM)
NIOSH 1500 Mod.	DT00504		1						200	2	TOTAL (Orbo 32 SM)
Excess									200	3	Excess
Excess									200	4	Excess
GAS, CO + CO2	DT00505		1						60	5	BAG Sample to Airtoxics Lab.
TO11	DT00506		1						500	6	TOTAL
Excess									500	7	Excess
NIOSH 2002	DT00507		1						750	8	TOTAL (SKC 226-15)
Excess									750	9	Excess
Excess									750	10	TOTAL (Orbo 53)
Excess									750	11	Excess
Moisture									500	12	EPA Method 4
Excess									2500	13	
PUF	DT005		1						15L		Sample using opposite port

PRE-PRODUCTION DT SERIES SAMPLE PLAN

Method	Sample #	Data	Sample	Duplicate	Blank	Breakthrough	Spike	Spike Duplicate	Flow (ml/min)	Train Channel	Comments
1/17/01											Samples to Clayton Lab.
EVENT 6											Unless noted.
AIRSENSE	DT00601										TOTAL
THC	DT00602	X									TOTAL
NIOSH 1500 Mod.	DT00603		1						200	1	TOTAL (Orbo 32 SM)
NIOSH 1500 Mod.	DT00604		1						200	2	TOTAL (Orbo 32 SM)
Excess									200	3	Excess
Excess									200	4	Excess
GAS, CO + CO2	DT00605		1						60	5	BAG Sample to Airtoxics Lab.
TO11	DT00606		1						500	6	TOTAL
Excess									500	7	Excess
NIOSH 2002	DT00607		1						750	8	TOTAL (SKC 226-15)
Excess									750	9	Excess
Excess									750	10	Excess
Excess									750	11	Excess
Moisture									500	12	EPA Method 4
Excess									2500	13	
PUF	DT00608		1						15L		Sample using opposite port

PRE-PRODUCTION DT SERIES SAMPLE PLAN

Method	Sample #	Data	Sample	Duplicate	Blank	Breakthrough	Spike	Spike Duplicate	Flow (ml/min)	Train Channel	Comments
1/18/01											Samples to Clayton Lab.
EVENT 7											Unless noted.
AIRSENSE	DT00701										TOTAL
THC	DT00702	X									TOTAL
NIOSH 1500 Mod.	DT00703		1						200	1	TOTAL (Orbo 32 SM)
NIOSH 1500 Mod.	DT00704			1					200	2	TOTAL (Orbo 32 SM)
NIOSH 1500 Mod.	DT00705		1						200	3	TOTAL (Orbo 32 SM)
NIOSH 1500 Mod.	DT00706			1					200	4	TOTAL (Orbo 32 SM)
GAS, CO + CO2	DT00707		1						60	5	BAG Sample to Airtoxics Lab.
TO11	DT00708		1						500	6	TOTAL
TO11	DT00709			1					500	7	TOTAL
NIOSH 2002	DT00710		1						750	8	TOTAL (SKC 226-15)
NIOSH 2002	DT00711			1					750	9	TOTAL (SKC 226-15)
Excess									750	10	Excess
Excess									750	11	Excess
Moisture									500	12	EPA Method 4
Excess									2500	13	
PUF	DT007		1						15L		Sample using opposite port

PRE-PRODUCTION DT SERIES SAMPLE PLAN

Method	Sample #	Data	Sample	Duplicate	Blank	Breakthrough	Spike	Spike Duplicate	Flow (ml/min)	Train Channel	Comments
1/18/01											Samples to Clayton Lab.
EVENT 8											Unless noted.
AIRSENSE	DT00801										TOTAL
THC	DT00802	X									TOTAL
NIOSH 1500 Mod.	DT00803		1						200	1	TOTAL (Orbo 32 SM)
NIOSH 1500 Mod.	DT00804		1						200	2	TOTAL (Orbo 32 SM)
NIOSH 1500 Mod.	DT00805				1						QC - (Orbo 32 SM)
Excess									200	3	Excess
Excess									200	4	Excess
GAS, CO + CO2	DT00806		1						60	5	BAG Sample to Airtoxics Lab.
TO11	DT00807		1						500	6	TOTAL
TO11	DT00808				1						QC
Excess									500	7	Excess
NIOSH 2002	DT00809		1						750	8	TOTAL (SKC 226-15)
NIOSH 2002	DT00810				1						QC - (SKC 226-15)
Excess									750	9	Excess
Excess									750	10	Excess
Excess									750	11	Excess
Moisture									500	12	EPA Method 4
Excess									2500	13	
PUF	DT008		1						15L		Sample using opposite port

PRE-PRODUCTION DT SERIES SAMPLE PLAN

Method	Sample #	Data	Sample	Duplicate	Blank	Breakthrough	Spike	Spike Duplicate	Flow (ml/min)	Train Channel	Comments
1/18/01											Samples to Clayton Lab.
EVENT 9											Unless noted.
AIRSENSE	DT00901										TOTAL
THC	DT00902	X									TOTAL
NIOSH 1500 Mod.	DT00903		1						200	1	TOTAL (Orbo 32 SM)
NIOSH 1500 Mod.	DT00904		1						200	2	TOTAL (Orbo 32 SM)
Excess									200	3	Excess
Excess									200	4	Excess
GAS, CO + CO2	DT00905		1						60	5	BAG Sample to Airtoxics Lab.
TO11	DT00906		1						500	6	TOTAL
Excess									500	7	Excess
NIOSH 2002	DT00907		1						750	8	TOTAL (SKC 226-15)
Excess									750	9	Excess
Excess									750	10	Excess
Excess									750	11	Excess
Moisture									500	12	EPA Method 4
Excess									2500	13	
PUF	DT009		1						15L		Sample using opposite port

NIOSH 1500 Mod.	DT00908						X		200		BOTTLE - Mix 1A (Orbo 32 SM)
NIOSH 1500 Mod.	DT00909						X		200		BOTTLE - Mix 1A (Orbo 32 SM)

PRE-PRODUCTION DT SERIES SAMPLE PLAN

Method	Sample #	Data	Sample	Duplicate	Blank	Breakthrough	Spike	Spike Duplicate	Flow (ml/min)	Train Channel	Comments
1/18/01											Samples to Clayton Lab.
EVENT 10											Unless noted.
AIRSENSE	DT01001										TOTAL
THC	DT01002	X									TOTAL
NIOSH 1500 Mod.	DT01003		1						200	1	TOTAL (Orbo 32 SM)
NIOSH 1500 Mod.	DT01004		1						200	2	TOTAL (Orbo 32 SM)
Excess									200	3	Excess
Excess									200	4	Excess
GAS, CO + CO2	DT01005		1						60	5	BAG Sample to Airtoxics Lab.
TO11	DT01006		1						500	6	TOTAL
Excess									500	7	Excess
NIOSH 2002	DT01007		1						750	8	TOTAL (SKC 226-15)
Excess									750	9	Excess
Excess									750	10	Excess
Excess									750	11	Excess
Moisture									500	12	EPA Method 4
Excess									2500	13	
PUF	DT010		1						15L		Sample using opposite port

PRE-PRODUCTION DT SERIES SAMPLE PLAN

Method	Sample #	Data	Sample	Duplicate	Blank	Breakthrough	Spike	Spike Duplicate	Flow (ml/min)	Train Channel	Comments
1/18/01											Samples to Clayton Lab.
EVENT 11											Unless noted.
AIRSENSE	DT01101										TOTAL
THC	DT01102	X									TOTAL
NIOSH 1500 Mod.	DT01103		1						200	1	TOTAL (Orbo 32 SM)
NIOSH 1500 Mod.	DT01104		1						200	2	TOTAL (Orbo 32 SM)
Excess									200	3	Excess
Excess									200	4	Excess
GAS, CO + CO2	DT01105		1						60	5	BAG Sample to Airtoxics Lab.
TO11	DT01106		1						500	6	TOTAL
Excess									500	7	Excess
NIOSH 2002	DT01107		1						750	8	TOTAL (SKC 226-15)
Excess									750	9	Excess
Excess									750	10	Excess
Excess									750	11	Excess
Moisture									500	12	EPA Method 4
Excess									2500	13	
PUF	DT011		1						15L		Sample using opposite port

Test Series DT

Pre-Production Process Instructions

- A. Experiment: A study to compare the impact of tap water on molds with the Western/Southern Bentonite ratio of 4:1. The mold will be made from virgin green sand mold materials consisting of Seacoal; bentonite in the ratio of 4:1; tempered with tap water; poured at constant weight, surface area, sodium silicate core weight, and shape factor, a single batch turns test. This test is to be compared to reference tests DQ, DR, and comparative tests DA, DS, & DU.
1. Mold sand: Virgin mix of Wexford W450 lake sand, Okie 90 silica sand, western and southern Bentonites in ratio of 4:1, Seacoal, and tap water per recipe.
 2. Core: Step core made with Wedron 420 silica sand and 5% J.B. DeVeene Kleencast #1[®] sodium silicate core binder, gassed with CO₂.
 3. Metal: Class 30-35 gray cast iron poured at 2630°F.

Caution: Observe all safety precautions attendant to these operations as delineated in the Pre-Production operating and safety instruction manual.

4. The following test shall be conducted:
 - a. Sand batch: Single sand batch to be used for all 11 DT molds. All molds will be monitored in real time with the Airsense spectrometer and THC analyzer. Additionally sample tubes and condensables samples will be collected on each mold.
 - b. DT001: Virgin mix as described above, vented mold, reference JB DeVeene Kleencast #1[®] cores, tap water.
 - c. DT002-DT011: The 80/20 western/southern bentonite comparative test; Re-mulled, reconstituted sand, tap water, vented mold, reference JB DeVeene Kleencast #1[®] cores.

B. Sodium silicate Core

1. Core sand mixing.
 - a. Clean the core sand mixer.
 - b. Add 50 pounds of Wedron 420 silica sand to the running mixer.
 - c. Slowly pour 2.5 +/- .03 pounds of Sodium silicate resin into the sand. Distribute the resin as it is poured. Avoid pouring the resin on the plows or walls of the mixer or in one location or resin balling will occur preventing proper mixing.
 - d. Mix for three minutes after the resin is all in.
 - e. One batch will make about 6 cores.
 - f. Once per hour catch a clean 50-100 gm sample of the raw sand for the sand lab to perform a core LOI test. Place the sample in a clean bag and label with date and time.

2. Making step cores.

- a.** Place the core box on a flat surface large open side up.
- b.** Place about 2 inches of sand in the bottom of the step section. Firmly tamp the sand into the 1 inch diameter bottom using a ½ inch diameter rod.
- c.** Place a few more inches of sand in the core box and compact it. Take care to avoid parting planes. Repeat until the box is full.
- d.** Scrape off the excess. Remove the unused sand away from the gassing area.
- e.** Place a gassing plate on the open end of the core box.
- f.** Hold the plate down and gas the core for 20 seconds on each of the two gas holes with 20 psi CO₂ gas.
- g.** Dry the cores for two hours at 250°F and allow to cool.
- h.** Bag the cores in moisture proof bags for storage.
- i.** Identify each bag by batch number.
- j.** Record the date, batch number, the batch mix time, sand batch weight, resin weight, the gassing time, the gas pressure, individual dried core weight, good core count from each batch.
- k.** The sand lab will determine the core LOI and the Resin Content LOI associated with each mold.

C. Sand preparation

- 1. Start up batch: make 1, DT001.**
 - a.** Thoroughly clean the pre-production muller.
 - b.** Weigh and add 1600 +/- 50 pounds total new Wexford W450 Lakesand and Oklahoma 90 silica sand, per the recipe, to the running pre-production muller.
 - c.** Add 5 pounds of tap water to the Muller to suppress dust distributing it across the sand. Allow to mix for 1 minute.
 - d.** Add the clays in proportion to the sand weight per the standardization mixture recipe for this test slowly to the muller to allow them to be distributed throughout the sand mass.
 - e.** Dry mull for about 3 minutes to allow distribution and some grinding of the clays to occur.
 - f.** Split the batch into approximately equal sized portions.
 - g.** To each half-batch temper the sand-clay mixture slowly with tap water to allow for distribution.
 - h.** After about 2 gallons of water have been added allow 30 seconds of mixing then start taking compactability test samples. Grab sufficient sample at each compactability test to fill a quart zip-lock bag. Label each bag and retain it.
 - i.** Based on each test add water incrementally to adjust the temper. Allow 1 minute of mixing. Retest. Repeat until the compactability is in the range 45-51%.
 - j.** Discharge the sand into the mold half.
 - k.** Record the total sand mixed in the combined batch, the total of each type of clay added to the combined batch, the amount of water added to each half batch, the total mix time on each half batch, the final compactability and sand temperature at

charge and discharge on each half batch, the time that the water was taken from its source, the time that each mold half was complete, the time the mold is delivered to the pour area, and the water type and temperature. Record the maximum Mullor current just prior to sand discharge.

- 1) The sand will be characterized for Methylene Blue Clay, Moisture content, Compatibility, Green Compression strength, 1800°F loss on ignition (LOI), and 900°F volatiles. Each volatile and LOI test requires a separate 50-gram sample from the collected sand.

Note: The sand lab data must be available and approved by the process engineer before the mold is committed to pouring.

2. Re-mulling: Make 10, DT002-DT011.
 - a. Add all the sand from the previous mold to the muller including any sand previously mixed but not placed in the mold.
 - b. Add 5 pounds of tap water to the muller to suppress dust distributing it across the sand. Allow to mix for 1 minute.
 - c. Add the clays and coals per the re-bond recipe slowly to the muller to allow them to be distributed throughout the sand mass. Follow the above procedure beginning at C.1.e.
 - d. The sand lab will sample the mold sand from each mold as it is being made and from the shaken out sand after it has been re-blended but before the additions are made. The three (3) "MOLD" samples will be taken from the initial muller discharge into the drag, from the last sand into the drag, and the last sand into the cope. The three (3) "SHAKEOUT" samples shall be taken from within the muller at three locations approximately 120 degrees apart. The sand will be tested for MB clay, compatibility, and moisture content, green compression strength, 1800°F LOI, 900°F volatile. Each volatile and LOI test requires a separate 50-gram sample from the collected sand. Report results associated with the mold (test number, DT0xx) from which it was taken.

Note: The sand lab data must be available from the blended shakeout sand and a recipe approved by the process engineer before the next mold is prepared. Additionally the sand lab data must be available and approved by the process engineer for the next mold's sand before the mold is committed to pouring.

Note: Once each day, at the time when the shakeout sand has been re-blended, the total sand shall be weighed and recorded. Extra sand shall be discarded to keep the batch weight at 1600 +/- 50 pounds.

D. Molding: Step block pattern.

1. Pattern preparation:
 - a. Inspect and tighten all loose pattern and gating pieces.
 - b. Repair any damaged pattern or gating parts.

2. Making the green sand mold.
 - a. Lightly rub parting oil from a damp oil rag on the pattern particularly in the corners and recesses.

Caution: Do not pour gross amounts of parting oil on the pattern to be blown off with air. This practice will leave sufficient oil at the parting line to be adsorbed by the sand weakening it and the burning oil will be detected by the emission samplers.

- b. Place 4 inches of loose sand on the pattern and ram all pockets and the perimeter tightly using only vertical strokes. Caution: non-vertical ramming strokes will move blocks of compacted sand leaving voids, which may cause the mold to fail. Do not ram all the sand to form a parting plane surface or the mold can fail. Add sand in increments of 4-6 inches of loose sand ramming tightly around the pattern.
- c. When the rammed sand covers the pattern by 3 or more inches the sand can be rammed less tightly but still avoid lamination planes.
- d. Level off the cope and drag mold surfaces opposite the pattern to minimize metal splatter and allow the mold to be fully supported.
- e. Cut the pour basin smoothly to reduce the amount of sand prone to get washed down the sprue.
- f. Remove the pattern, inspect and blow out the mold, and set the cores in the drag. Verify that the cores are fully set in their prints. The step cores will be flush with the parting line. If a piece of the mold is missing contact your supervision for a decision on the acceptability of the mold.
- g. Vent the cope when required according to the test list above with $\frac{1}{4}$ vents according to the template.
- h. Close the mold straight being careful not to crush anything.
- i. Bolt the flask halves together and deliver the mold to the pouring area.
- j. Weigh and record the closed unpoured mold, the core weight, and the sand weight by difference.

E. Emission hood:

1. Loading.
 - a. Hoist the mold onto the shakeout deck within the emission hood.
 - b. Close, seal, and lock the emission hood
2. Shakeout.
 - a. After the cooling time prescribed in the emission test plan turn on the shakeout unit and run for the time prescribed in the emission test plan.
 - b. Turn off the shakeout, open the hood, remove the flask with casting, and recover the sand from the pit.
 - c. Weigh and record the metal poured.
 - d. Place the recovered sand in its entirety back into the brushed out muller and blend for three (3) minutes. Take three (3) samples from the re-blended shakeout sand. The three (3) "SHAKEOUT" samples shall be taken from within the muller at three locations 120 degrees apart. The sand will be tested for MB clay,

compactability, and moisture content, green compression, 1800°F LOI, and 900°F volatile. Each volatile and LOI test requires a separate 50-gram sample from the collected sand. Report results associated with the mold (test number, DA0xx) from which it was taken.

F. Melting:

1. Initial charge:
 - a. Charge the furnace according to the heat recipe.
 - b. Place part of the steel scrap on the bottom, followed by carbon alloys, and the balance of the steel.
 - c. Place a pig on top on top.
 - d. Bring the furnace contents to the point of beginning to melt over a period of 1 hour at reduced power.
 - e. Add the balance of the metallic under full power until all is melted and the temperature has reached 2600 to 2700°F.
 - f. Slag the furnace and add the balance of the alloys.
 - g. Raise the temperature of the melt to 2700°F and take a DataCast 2000 sample. The temperature of the primary liquidus (TPL) must be in the range of 2200-2350°F.
 - h. Hold the furnace at 2500-2550°F until near ready to tap.
 - i. When ready to tap raise the temperature to 2700°F and slag the furnace.
 - j. Record all metallic and alloy additions to the furnace, tap temperature, and pour temperature. Record all furnace activities with an associated time.
2. Back charging.
 - a. Back charge the furnace according to the heat recipe,
 - b. Charge a few pieces of steel first to make a splash barrier, followed by the carbon alloys.
 - c. Follow the above steps beginning with F.1.e.
3. Emptying the furnace.
 - a. Pig the extra metal only after the last emission measurement is complete to avoid contaminating the air sample.
 - b. Cover the empty furnace with ceramic blanket to cool.

G. Pouring:

1. Preheat the ladle.
 - a. Tap 400 pounds more or less of 2700°F metal into the cold ladle.
 - b. Casually pour the metal back to the furnace.
 - c. Cover the ladle.
 - d. Reheat the metal to 2780 +/- 20°F.
 - e. Tap 450 pounds of iron into the ladle while pouring inoculating alloys onto the metal stream near its base.
 - f. Cover the ladle to conserve heat.

- g.** Move the ladle to the pour position, open the emission hood pour door and wait until the metal temperature reaches 2630 +/- 10°F.
- h.** Commence pouring keeping the sprue full.
- i.** Upon completion close the hood door, return the extra metal to the furnace, and cover the ladle.

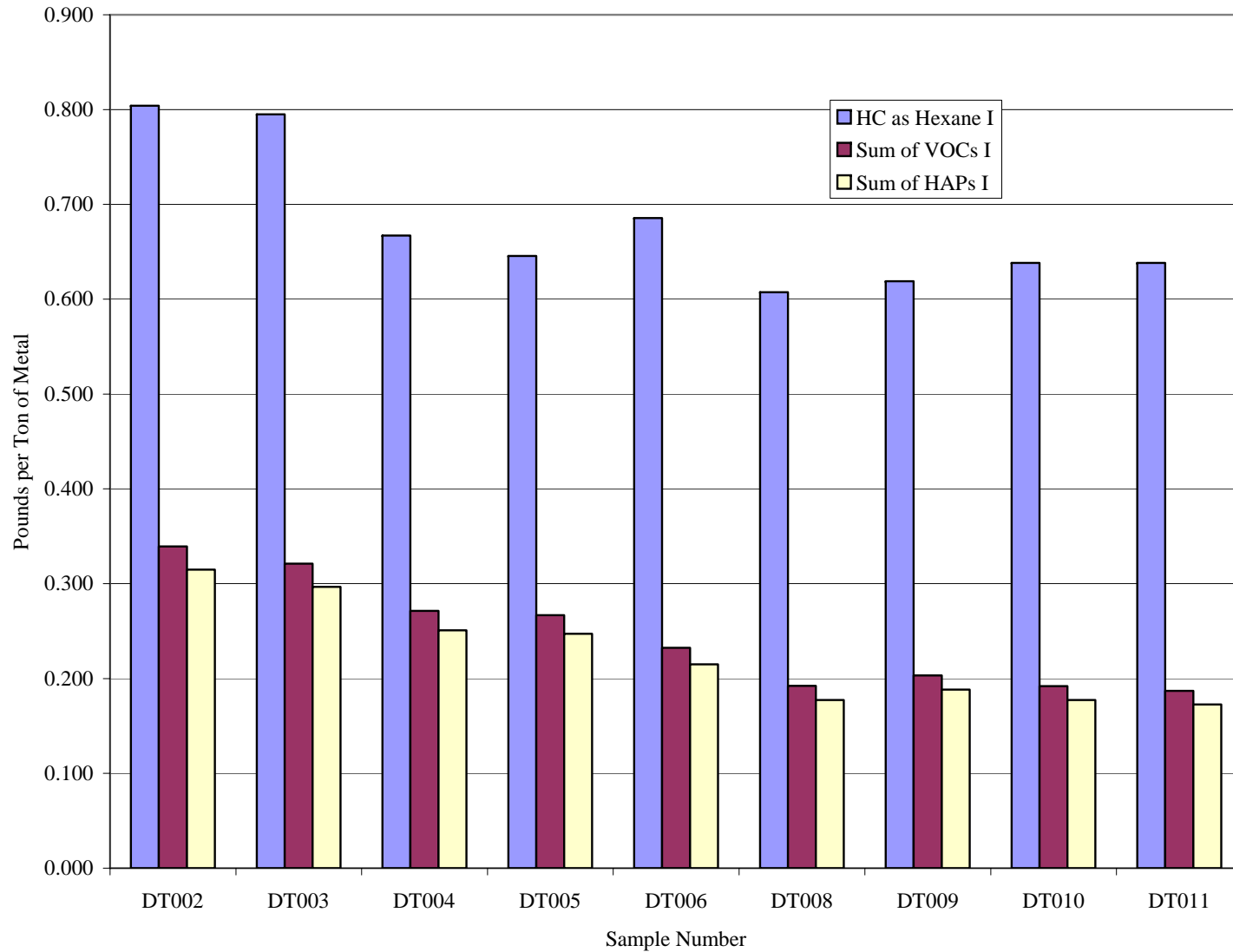
Steven Knight
Sr. Process Engineer
12/12/00

THIS PAGE INTENTIONALLY BLANK

**APPENDIX B DETAILED EMISSION TEST RESULTS FOR
TEST SERIES DT**

THIS PAGE INTENTIONALLY BLANK

Test Plan DT Emissions Comparison



Test Plan DT Individual Test Results – Lbs/Ton Metal

POMs	HAPs	COMPOUND / SAMPLE NUMBER	DT001	DT002	DT003	DT004	DT005	DT006	DT007	DT008	DT009	DT010	DT011	Average	STDEV
		Pour Dates	1/16/01	1/16/01	1/16/01	1/17/01	1/17/01	1/17/01	1/17/01	1/17/01	1/18/01	1/18/01	1/18/01	1/18/01	
		TGOC (THC) as Propane	I	3.53E+00	3.30E+00	2.78E+00	2.78E+00	2.41E+00	I	I	2.10E+00	2.10E+00	2.07E+00	2.57E+00	5.65E-01
		HC as Hexane	I	8.04E-01	7.95E-01	6.67E-01	6.46E-01	6.85E-01	I	6.08E-01	6.19E-01	6.38E-01	6.38E-01	6.78E-01	7.28E-02
		Sum of VOCs	I	3.39E-01	3.21E-01	2.72E-01	2.67E-01	2.32E-01	I	1.92E-01	2.03E-01	1.92E-01	1.87E-01	2.45E-01	5.78E-02
		Sum of HAPs	I	3.15E-01	2.97E-01	2.51E-01	2.47E-01	2.15E-01	I	1.77E-01	1.88E-01	1.77E-01	1.73E-01	2.27E-01	5.37E-02
		Sum of POMs	I	ND	ND	ND	ND	ND	I	ND	ND	ND	ND	NA	NA
Individual HAPs and VOCs															
	x	Benzene	I	1.53E-01	1.44E-01	1.16E-01	1.13E-01	9.46E-02	I	7.84E-02	8.23E-02	7.69E-02	7.46E-02	1.04E-01	2.96E-02
	X	Toluene	I	7.17E-02	7.02E-02	5.98E-02	6.05E-02	5.33E-02	I	4.48E-02	4.80E-02	4.51E-02	4.42E-02	5.53E-02	1.08E-02
	X	Xylenes	I	4.77E-02	4.90E-02	4.09E-02	4.01E-02	3.62E-02	I	3.01E-02	3.16E-02	3.01E-02	2.97E-02	3.72E-02	7.59E-03
	X	Phenol	I	1.90E-02	1.51E-02	1.24E-02	1.30E-02	1.13E-02	I	8.83E-03	1.00E-02	9.23E-03	9.03E-03	1.20E-02	3.36E-03
	X	Acetaldehyde	I	8.00E-03	8.43E-03	7.69E-03	7.51E-03	7.80E-03	I	6.96E-03	6.96E-03	6.30E-03	5.74E-03	7.27E-03	8.57E-04
	x	Ethylbenzene	I	8.86E-03	1.02E-02	8.25E-03	7.21E-03	6.95E-03	I	6.15E-03	6.12E-03	5.76E-03	5.75E-03	7.25E-03	1.54E-03
	X	Aniline	I	6.62E-03	I	6.35E-03	5.36E-03	4.82E-03	I	2.20E-03	3.40E-03	4.13E-03	3.66E-03	4.57E-03	1.51E-03
z	x	1-Methylnaphthalene	I	ND	ND	ND	ND	ND	I	ND	ND	ND	ND	NA	NA
z	x	2-Methylnaphthalene	I	ND	ND	ND	ND	ND	I	ND	ND	ND	ND	NA	NA
z	x	Naphthalene	I	ND	ND	ND	ND	ND	I	ND	ND	ND	ND	NA	NA
		Octane	I	1.49E-02	1.43E-02	1.18E-02	1.07E-02	9.13E-03	I	8.20E-03	8.27E-03	8.47E-03	8.53E-03	1.05E-02	2.63E-03
		1,2,4-Trimethylbenzene	I	9.41E-03	1.01E-02	8.89E-03	8.99E-03	8.25E-03	I	6.57E-03	6.53E-03	5.86E-03	5.69E-03	7.81E-03	1.66E-03
Other Analytes															
		Condensables	I	4.56E-01	3.45E-01	3.28E-01	3.49E-01	I	I	2.16E-01	2.38E-01	2.21E-01	2.03E-01	2.95E-01	8.93E-02
		Carbon Monoxide	I	5.02E+00	4.90E+00	4.51E+00	5.30E+00	4.95E+00	I	1.45E+00	4.04E+00	4.84E+00	5.43E+00	4.49E+00	1.21E+00
		Methane	I	1.59E+00	1.47E+00	1.20E+00	1.26E+00	1.08E+00	I	4.33E-01	8.35E-01	9.33E-01	9.49E-01	1.08E+00	3.49E-01
		Carbon Dioxide	I	2.51E+01	2.50E+01	2.46E+01	2.69E+01	2.82E+01	I	2.68E+01	2.78E+01	2.71E+01	2.61E+01	2.64E+01	1.30E+00
		Ethane	I	ND	ND	ND	ND	ND	I	ND	ND	ND	ND	NA	NA
		Propane	I	ND	ND	ND	ND	ND	I	ND	ND	ND	ND	NA	NA
		Isobutane	I	ND	ND	ND	ND	ND	I	ND	ND	ND	ND	NA	NA
		Butane	I	ND	ND	ND	ND	ND	I	ND	ND	ND	ND	NA	NA

POMs	HAPs	COMPOUND / SAMPLE NUMBER	DT001	DT002	DT003	DT004	DT005	DT006	DT007	DT008	DT009	DT010	DT011	Average	STDEV
			1/16/01	1/16/01	1/16/01	1/17/01	1/17/01	1/17/01	1/17/01	1/17/01	1/18/01	1/18/01	1/18/01	1/18/01	
		Pour Dates	1/16/01	1/16/01	1/16/01	1/17/01	1/17/01	1/17/01	1/17/01	1/18/01	1/18/01	1/18/01	1/18/01		
		Neopentane	I	ND	ND	ND	ND	ND	I	ND	ND	ND	ND	NA	NA
		Isopentane	I	ND	ND	ND	ND	ND	I	ND	ND	ND	ND	NA	NA
		Pentane	I	ND	ND	ND	ND	ND	I	ND	ND	ND	ND	NA	NA

ND: Non Detect; **NA:** Not Applicable

All "Other Analytes" are not included in the Sum of HAPs or VOCs.

I: Data rejected based on data validation considerations.

THIS PAGE INTENTIONALLY BLANK

APPENDIX C PROCESS AND SOURCE DATA FOR TEST DT

THIS PAGE INTENTIONALLY BLANK

Process and Source Data for Test DT

Description	DT001	DT002	DT003	DT004	DT005	DT006	DT007	DT008	DT009	DT010	DT011	Averages	Averages
	1/16/01	1/16/01	1/16/01	1/17/01	1/17/01	1/17/01	1/17/01	1/18/01	1/18/01	1/18/01	1/18/01	All	For Report
Casting Metal Weight, lbs.	0	252	251	249	240	241	Note 2	237	240	246	246	220	243
Total Mold Weight, lbs.	1342	1356	1332	1355	1361	1354	1362	1365	1342	1345	1332	1350	1351
Total Core Weight, lbs.	59.48	59.17	59.83	60.33	60.51	60.82	60.26	59.87	60.18	60.05	60.18	60.06	60.28
Compactability, %	48	46	46	46	50	47	45	51	50	45	45	47	48
Total Binder Weight, lbs	2.831	2.816	2.848	2.872	2.880	2.895	2.868	2.850	2.865	2.858	2.865	2.859	2.87
No. Cavities Poured	-	8	8	8	8	8	8	8	8	8	8	8	8
LOI, % (at mold) 1800° F	5.83	5.83	5.51	5.53	5.59	4.86	4.73	5.00	4.76	4.79	4.67	5.19	5.03
LOI, % (at shakeout) 1800° F	5.78	5.51	5.47	5.07	4.86	4.89	4.67	4.36	4.40	4.76	4.52	4.94	4.69
Clays, % (at mold)	7.24	7.05	6.85	7.49	7.11	6.98	6.72	7.36	6.98	7.36	7.62	7.16	7.27
Clays, % (at shakeout)	6.14	6.14	6.14	5.94	6.07	5.94	5.81	6.46	6.33	6.07	5.94	6.09	6.11
LOI, % (Cores) 1400°F	0.59	0.61	0.58	0.55	0.57	0.58	0.57	0.55	0.60	0.58	0.54	0.57	0.57
Volatiles, % (at mold) avg. 900°F	1.34	1.18	1.10	0.96	0.96	0.62	0.80	0.80	0.84	0.72	0.64	0.91	0.79
Volatiles, % (at shakeout) avg. 900°F	1.16	1.04	0.88	0.90	0.86	0.64	0.78	0.70	0.70	0.68	0.62	0.81	0.73
Pouring Temperature, °F	2628	2626	2627	2622	2636	2624	2622	2634	2634	2631	2640	2629	2632
Mold Strength, psi	11.60	13.25	15.56	16.30	17.42	17.45	17.07	18.48	19.13	19.27	19.14	16.79	18.17
Core Resin Content, %	4.76	4.76	4.76	4.76	4.76	4.76	4.76	4.76	4.76	4.76	4.76	4.76	4.76
Water Type used in Mold	Tap	Tap	Tap	Tap	Tap	Tap	Tap	Tap	Tap	Tap	Tap	Tap	Tap
Total Clays - added, lbs/mold	92.48	8.80	8.80	11.20	5.28	6.40	8.80	10.56	5.28	9.30	8.80	15.97	8.12
Seacoal - added, lbs/mold	87.04	0.00	0.00	1.60	1.60	0.00	0.00	6.40	5.60	4.48	4.80	10.14	3.50
Lignite - added, lbs/mold	-	-	-	-	-	-	-	-	-	-	-	-	-
Soda Ash - added, gms/mold	-	-	-	-	-	-	-	-	-	-	-	-	-
Mold Sand Acidity, pH	ND	ND	ND	ND	ND	ND	ND	ND	ND	ND	ND	ND	ND
Average Stack Temperature, F	-	107	107	103	105	108	109	103	106	108	111	107	106
Total Moisture Content, %	-	1.19	1.14	1.11	1.22	1.29	1.10	1.4	1.44	1.35	1.34	1.26	1.31
Average Stack Velocity, ft./sec.	-	15.9	16.4	15.8	15.8	15.8	15.9	15.8	15.8	15.9	15.9	15.9	15.8
Avg. Stack Pressure, in. Hg	-	30.18	30.15	30.25	30.40	30.36	30.32	30.34	30.36	30.29	30.29	30.29	30.33
Stack Flow Rate, scfm	-	695	717	698	698	696	696	698	696	694	693	698	696

Binder fraction = (binder (lbs))/(sand + binder (lbs)). Binder fraction x total core weight used in mold = **Total Binder Weight**

Example: $(5.0 / (100 + 5.0)) = 0.0476$. 0.0476 (binder fraction) x 59.48 (total core wt.) = 2.831 (lbs binder per mold).

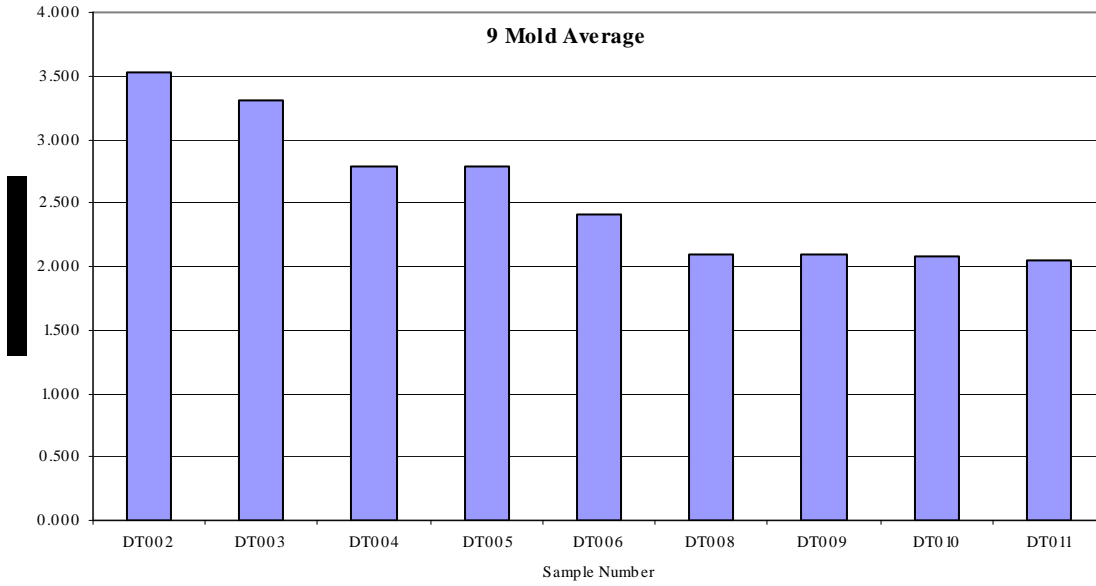
NOTE 1: DT001 shaker not working. **NOTE 2:** DT007 pour ran out. **NOTE 3:** DT001-003 will be used as conditioning molds and not used in the report.

THIS PAGE INTENTIONALLY BLANK

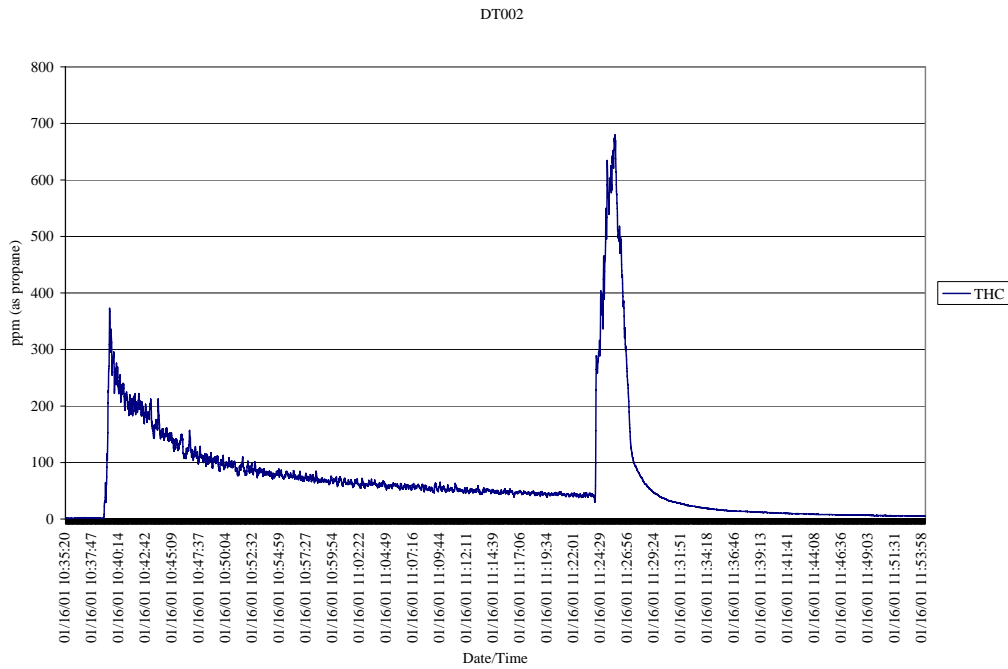
**APPENDIX D US EPA METHOD 25A CHARTS FOR TEST
PLAN DT**

THIS PAGE INTENTIONALLY BLANK

TGOC (THC) as Propane Results – 9 Mold Average

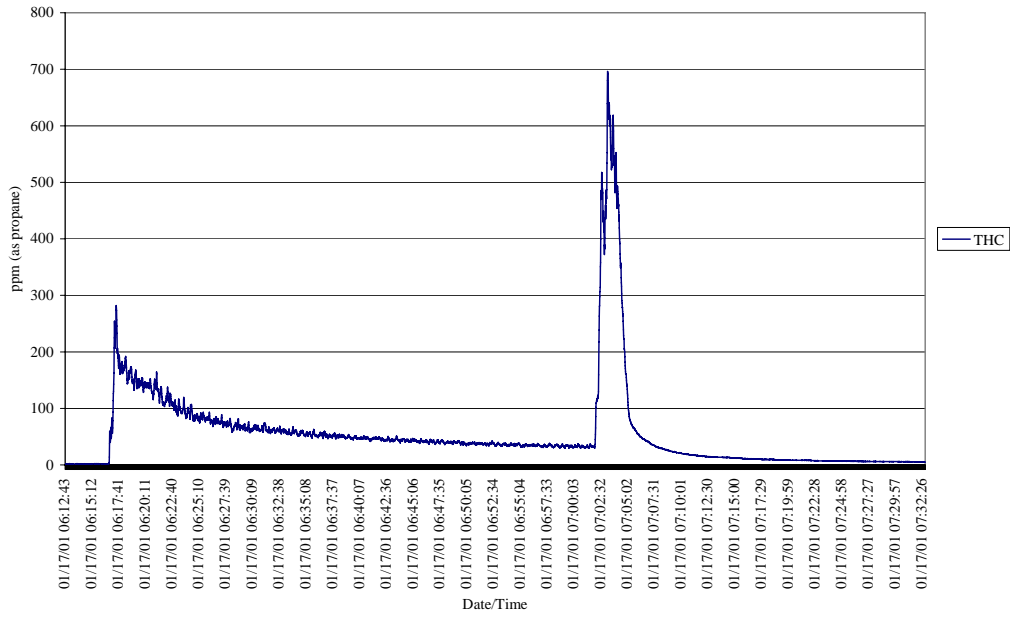


DT002



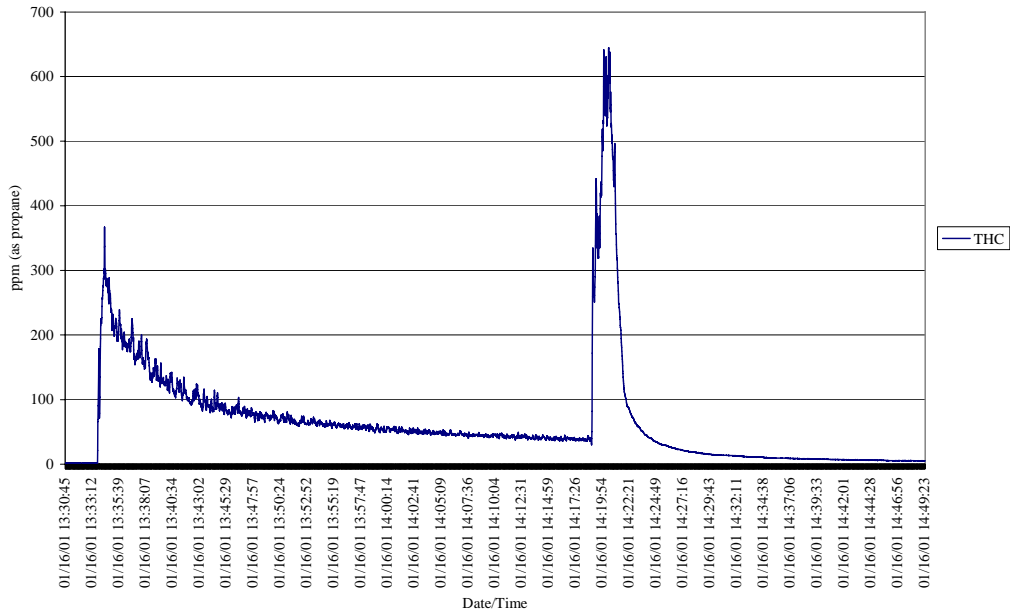
DT004

DT004



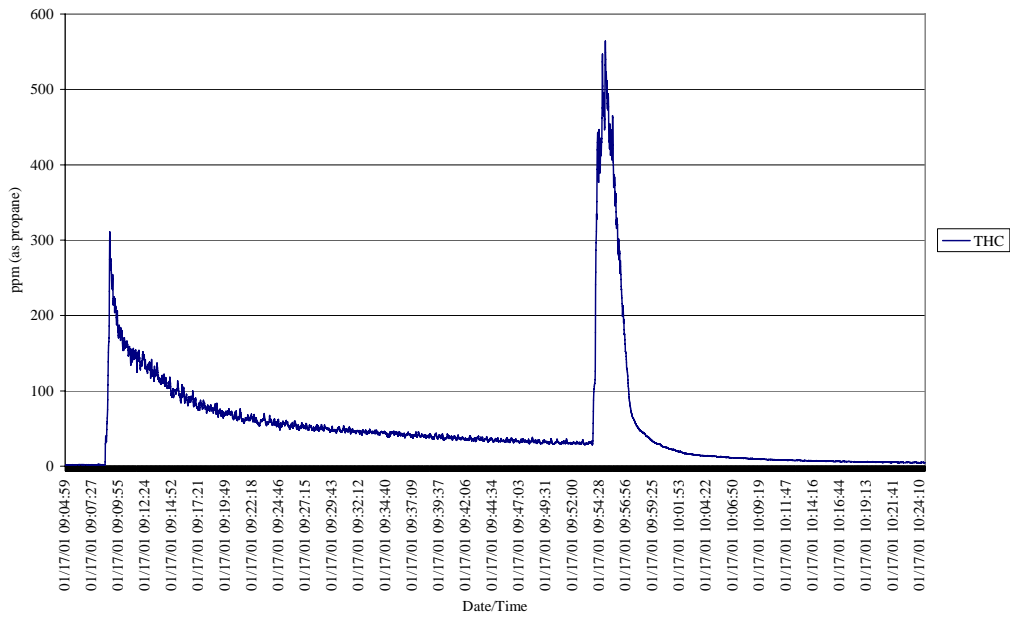
DT003

DT003



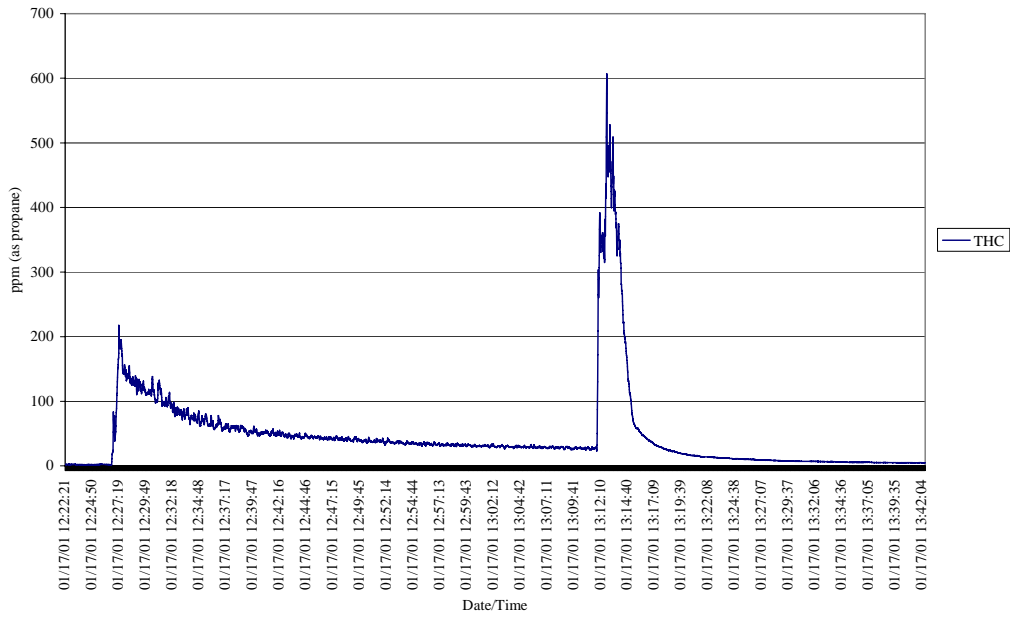
DT005

DT005

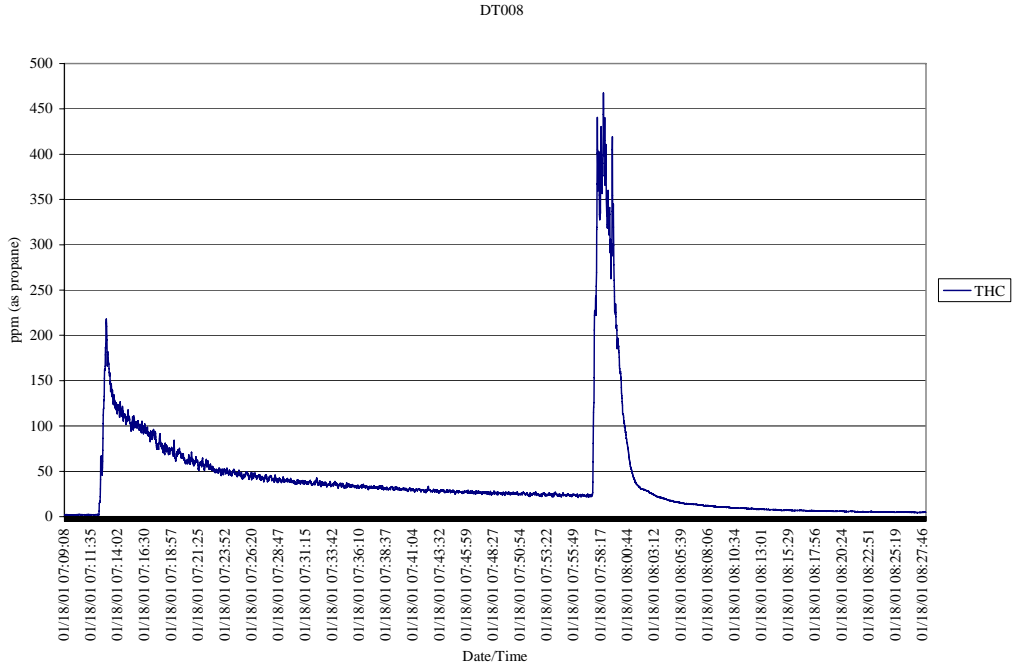


DT006

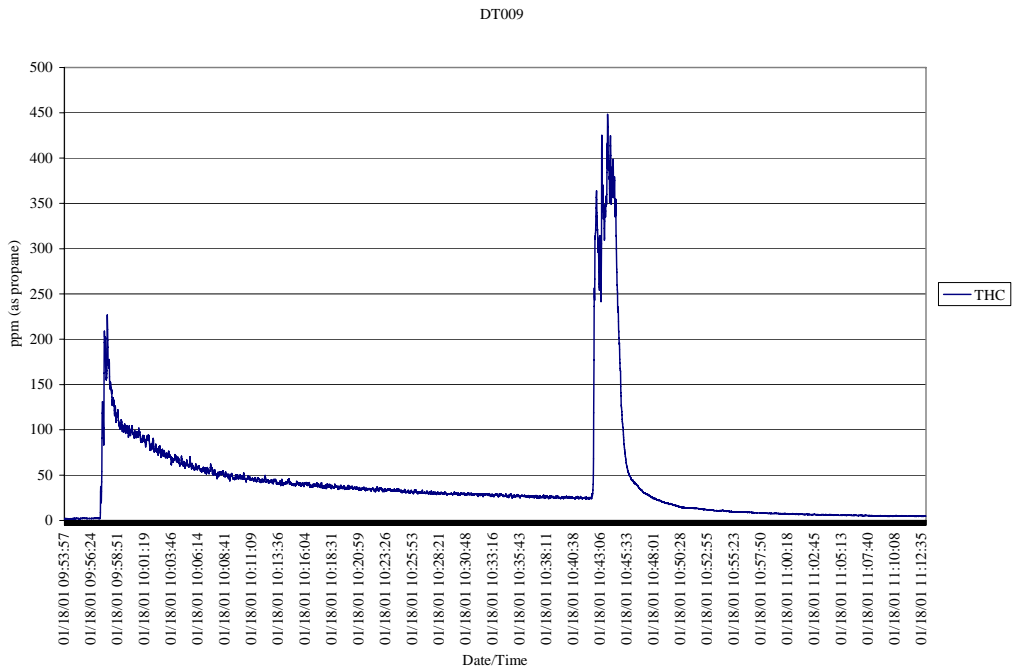
DT006



DT008

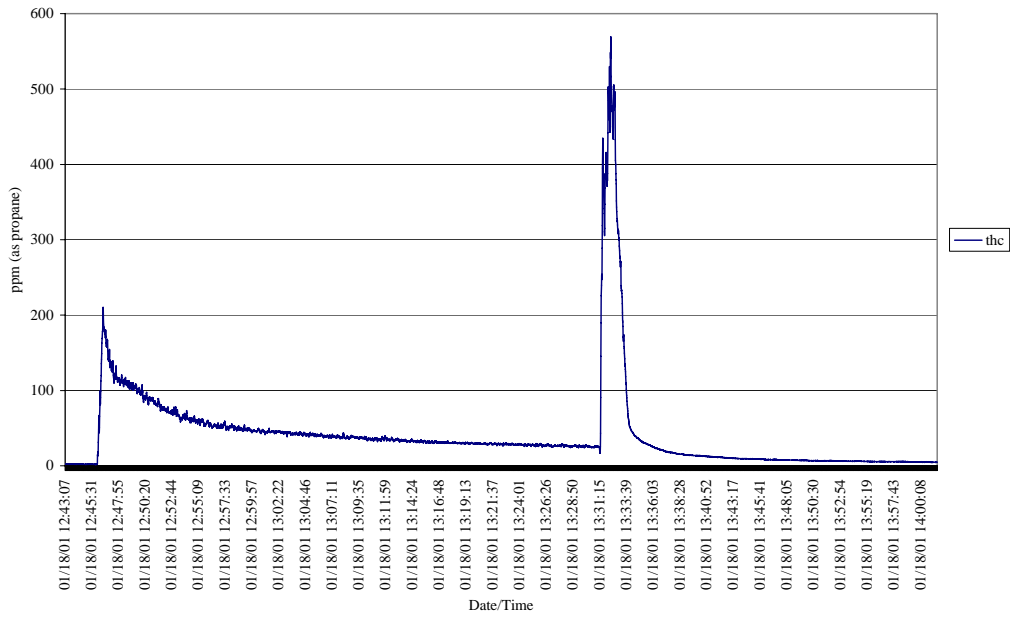


DT009



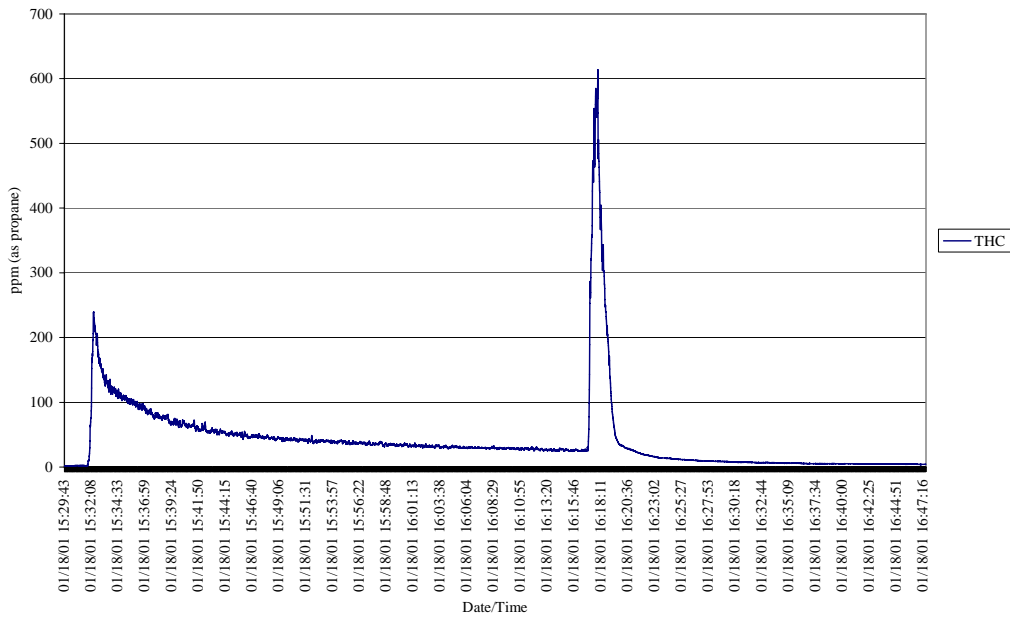
DT010

DT010



DT011

DT011



THIS PAGE INTENTIONALLY LEFT BLANK

APPENDIX E LISTING OF SUPPORT DOCUMENTS

THIS PAGE INTENTIONALLY BLANK

The following documents contain specific test results, procedures, and documentation used in support of this Test Plan

1. Casting Emission Reduction Program – Foundry Product Testing Guide: Reducing Emissions by Comparative Testing, May 4, 1998.
2. Technikon Emissions Testing and Analytical Testing Standard Operating Procedures.
3. Emission Baseline Test Results for the CERP Pre-Production Foundry Processes.
4. Evaluation of the Required Number of Replicate Tests to Provide Statistically Significant Air Emission Reduction Comparisons for the CERP Pre-Production Foundry Test Program.

THIS PAGE INTENTIONALLY BLANK

APPENDIX F GLOSSARY

THIS PAGE INTENTIONALLY BLANK

- ND** Non Detect; No Data
- NT** Lab testing was not done on this analyte.
- HC as Hexane** Calculated by the summation of all area between elution of Hexane through the elution of Hexadecane. The quantity of HC is performed against a five-point calibration curve of Hexane by dividing the total area count from C6 through C16 to the area of Hexane from the initial calibration curve.
- POM** Polycyclic Organic Matter (POM) including Naphthalene and other compounds that contain more than one benzene ring and have a boiling point greater than or equal to 100 degrees Celsius.
- LOI** Loss of Ignition. LOI represents the change in weight of a sample expressed as % of the original dry weight as a consequence of combustion in air at the test temperature of 1400°F